



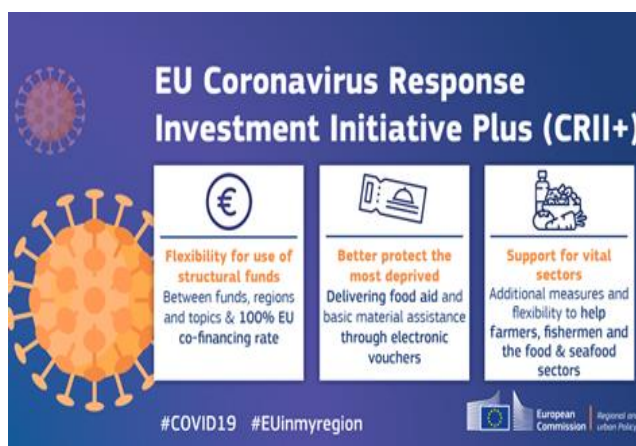
## ENRF Briefing Note

### Coronavirus Response Investment Initiative Plus

The European Commission has proposed a new set of measures to mobilise support against the COVID-19 outbreak. Namely, it is the Coronavirus Response Investment Initiative Plus (CRII+).

This new package aims at complementing earlier initiatives by introducing extraordinary flexibility on how non-utilised funds from the European Structural and Investment Funds can be mobilised to tackle the ongoing crisis. The CRII+ package is simplifying procedural steps linked to programme implementation, use of financial instruments and audit. This new flexibility is provided for the following:

1. Transfer possibilities across the three cohesion policy funds (the [European Regional Development Fund](#), [European Social Fund](#) and [Cohesion Fund](#)).
2. Transfers between the different categories of regions.
3. Flexibility when it comes to thematic concentration.
4. A 100% EU co-financing rate for cohesion policy programmes for the accounting year 2020-2021, allowing Member States to benefit for full EU financing for crisis-related measures.



The CRII+ is part of the first pack of measures that the European Commission has put in place as part of the Coronavirus Response Investment Initiative. This initiative aims at mobilising EU structural funds to allow for a quick and effective response to the COVID-19 crisis. The first Coronavirus Response Investment Initiative package consisted of three main elements: 1) about €8 billion of immediate liquidity to accelerate up to €37 billion of European public investment, 2) flexibility in applying EU spending rules, and 3) extend the scope of the EU Solidarity Fund.

It is key that nursing researchers across Europe benefit from the CRII+ and other EU funds to better tackle the COVID-19 crisis as well as the challenges that our healthcare systems are currently facing. In this context, the ENRF has published Briefing Notes the [EU Health Programme and how it links to nursing research](#), as well as the [Lump Sum Pilot \(a simplified H2020 funding\)](#).

In addition to all these, the European Commission is deploying the EU Solidarity Fund to support the most affected EU countries. The European Commission has also published a [dedicated website](#) with further information on the CRII+, a [Q&A](#), and a [Factsheet](#).

ENRF Briefing Note - 27 05 2020

**European Nursing Research Foundation (ENRF)**  
**Registration Number: 0533.978.961**  
Clos du Parnasse 11B, 1050 Brussels, Belgium  
Tel: +32 2 511 34 84 - Fax: +32 2 512 35 50  
Email: [enrf@enrf.eu](mailto:enrf@enrf.eu) – Web: [www.enrf.eu](http://www.enrf.eu)